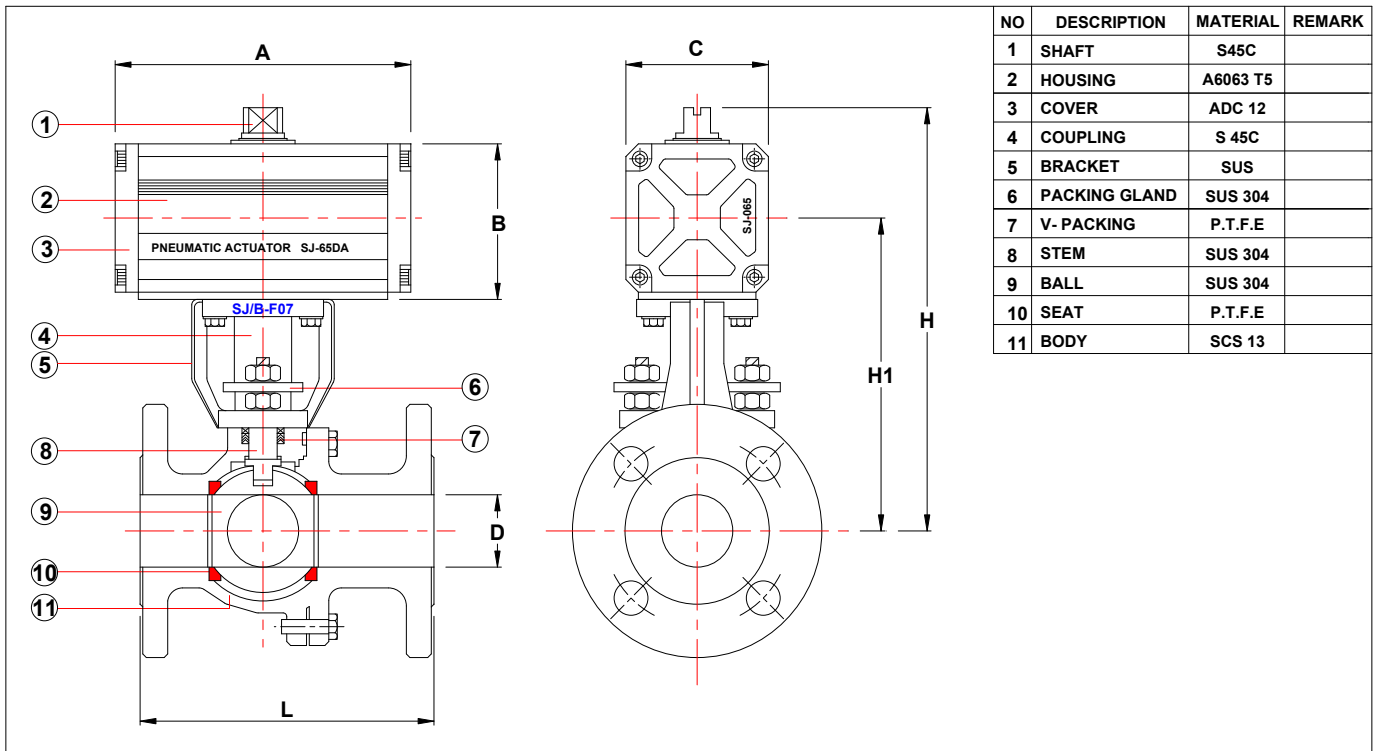


# DOUBLE ACTING FLANGE BALL VALVE (JIS 10K/20K, ANSI 150LB/300LB)



VALVE SIZE		15A~200A	
END CONNECTION		JIS/ANSI	
TEMPERATURE		80	180
FIELD OF USE		W.A.O.G	STEAM
ACTUATOR PRESS		4~7 BAR	
TYPE		RACK & PINION	
MATERIALS	BODY	SCS13/SCS14	
	SEAT	PTFE/CARBON TEFLON	
	BALL	SUS304/SUS316	



## DIMENSION

UNIT:mm

VALVE SIZE		ACTUATOR	A	B	C	D	L(10k)	L(20k)	H1	H
1/2"	15A	SJ-50DA	122	67	68	15	108	140	138	190
3/4"	20A	SJ-50DA	122	67	68	20	117	152	143	195
1"	25A	SJ-50DA	122	67	68	25	127	165	149	201
1-1/4"	32A	SJ-65DA	166	86	80	32	140	178	172	233
1-1/2"	40A	SJ-65DA	166	86	80	40	165	190	184	245
2"	50A	SJ-65DA	166	86	80	50	178	216	195	256
2-1/2"	65A	SJ-80DA	230	108	100	65	190	241	218	290
3"	80A	SJ-80DA	230	108	100	80	203	283	240	312
4"	100A	SJ-100DA	290	129	120	100	229	305	265	346